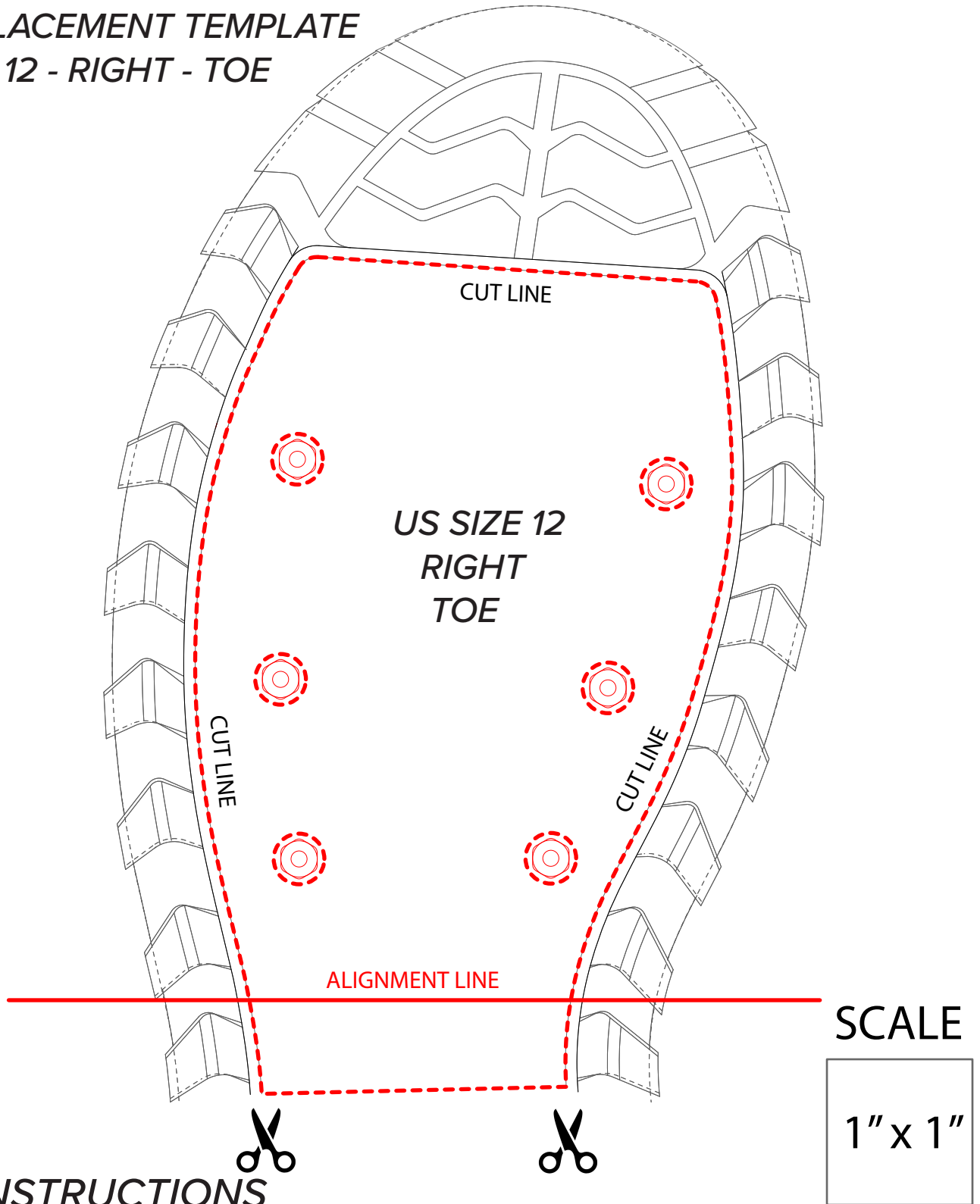


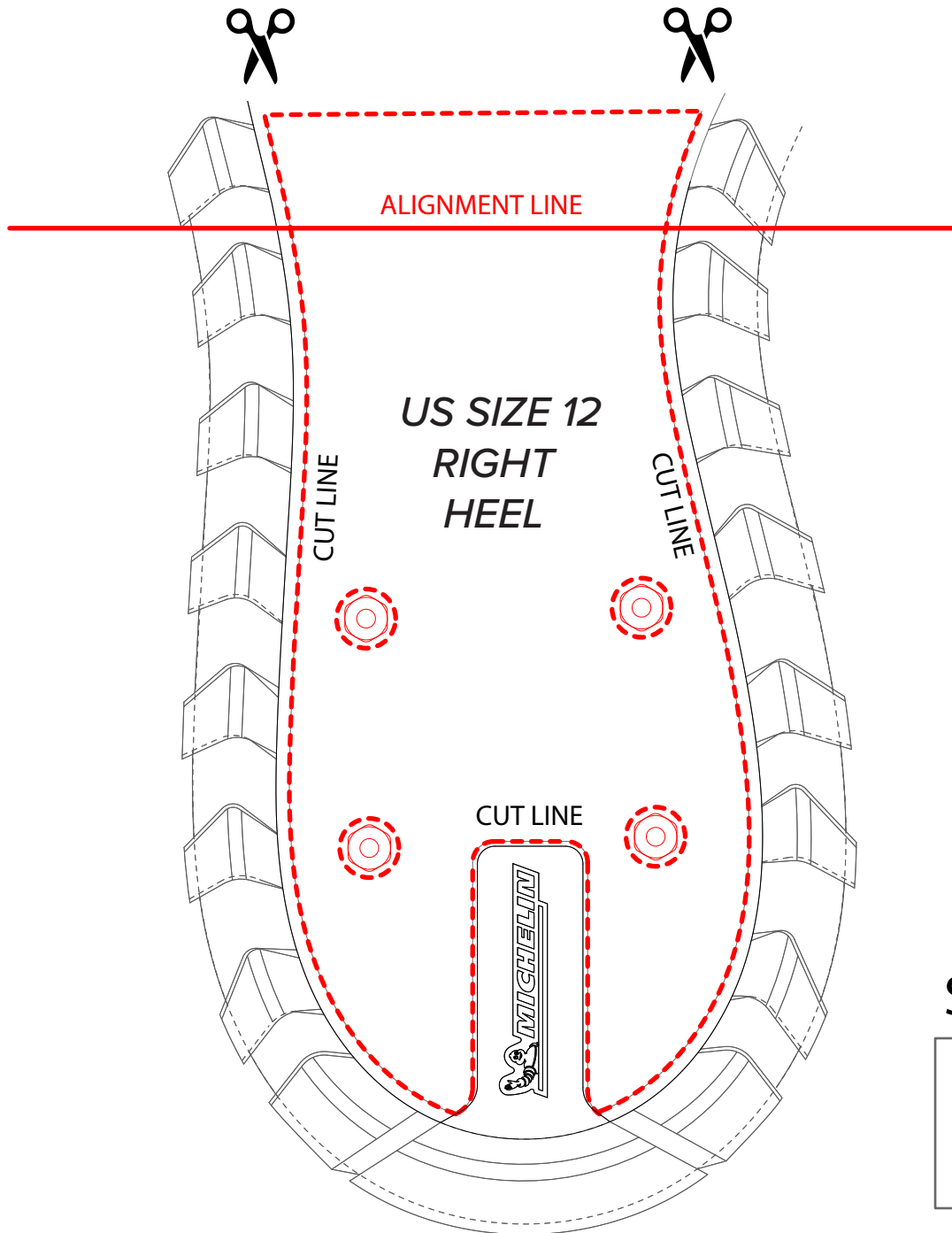
**219N ORVIS PRO HYBRID WADING BOOTS  
STUD PLACEMENT TEMPLATE  
US SIZE 12 - RIGHT - TOE**



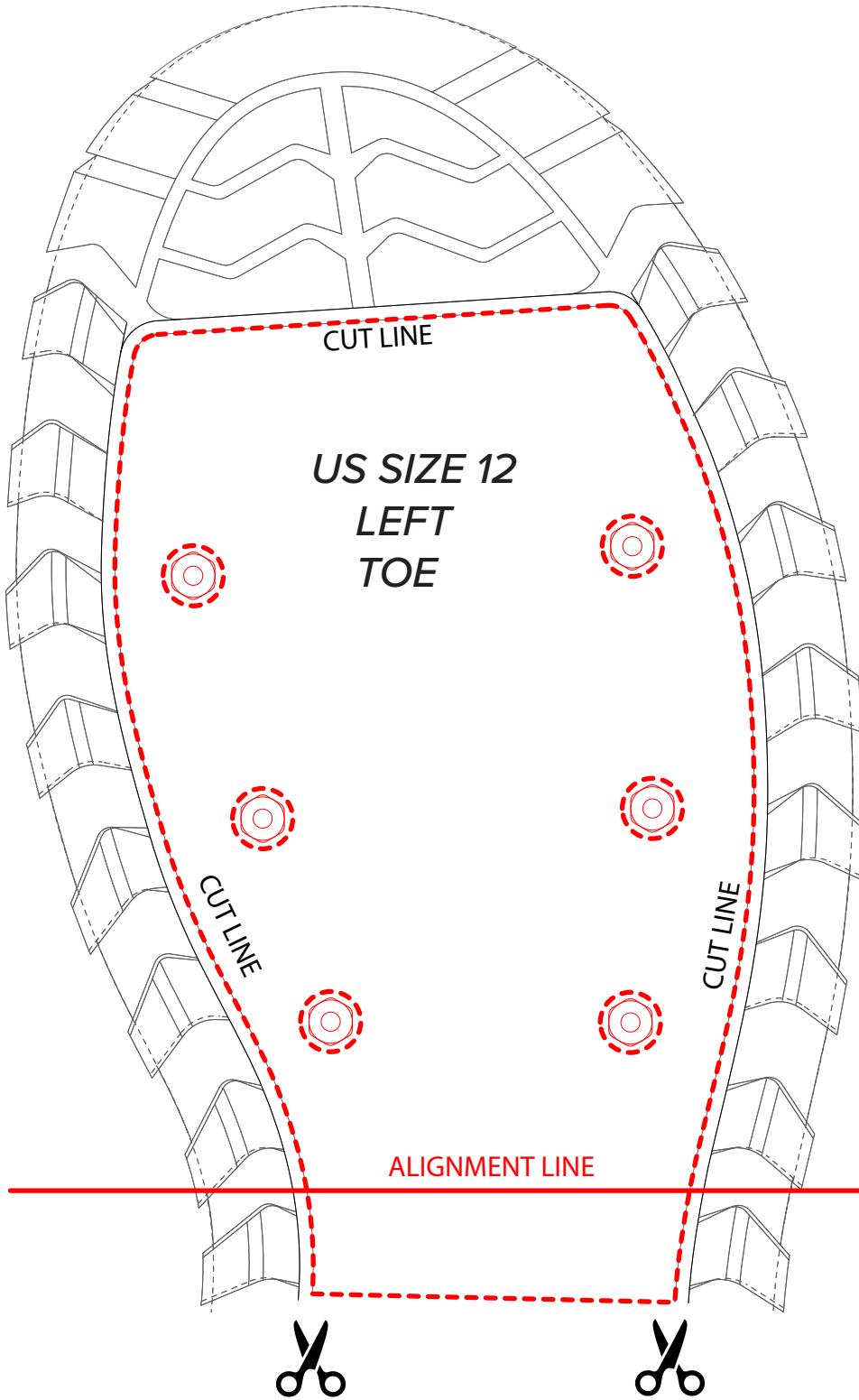
**INSTRUCTIONS**

1. PRINT TEMPLATE TO SCALE
2. CHECK SCALE BOX MEASUREMENT TO ENSURE ACCURACY
3. CUT OUT THE TEMPLATE ALONG THE DASHED LINES
4. USE ALIGNMENT LINE TO STRAIGHTEN
5. TAPE TOE AND HEEL TEMPLATES TOGETHER
6. MARK STUD LOCATIONS WITH PERMANENT MARKER
7. SCREW IN STUDS TO MARKED LOCATIONS

219N ORVIS PRO HYBRID WADING BOOTS  
STUD PLACEMENT TEMPLATE  
US SIZE 12 - RIGHT - HEEL



**219N ORVIS PRO HYBRID WADING BOOTS  
STUD PLACEMENT TEMPLATE  
US SIZE 12 - LEFT - TOE**



**SCALE**

**1" x 1"**

219N ORVIS PRO HYBRID WADING BOOTS  
STUD PLACEMENT TEMPLATE  
US SIZE 12 - LEFT - HEEL

